



hamlyn
smith.

Livingstone Road, Hove, BN3 3WN

£269,950

hamlyn smith.

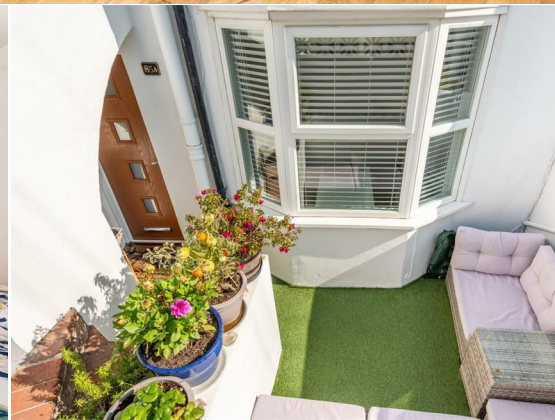
 1 Bedroom

 1 Reception

 1 Bathroom

This stylish and well-maintained one-bedroom garden apartment. Located on a peaceful residential street, just moments from Hove Station and a short stroll from the lively Church Road and Hove Seafront

- A well presented 1 bedroom apartment
- Front & rear garden
- Beautifully presented
- Share of freehold





hamlyn smith.

📍 50 Goldstone Villas, Hove, BN3 3RS

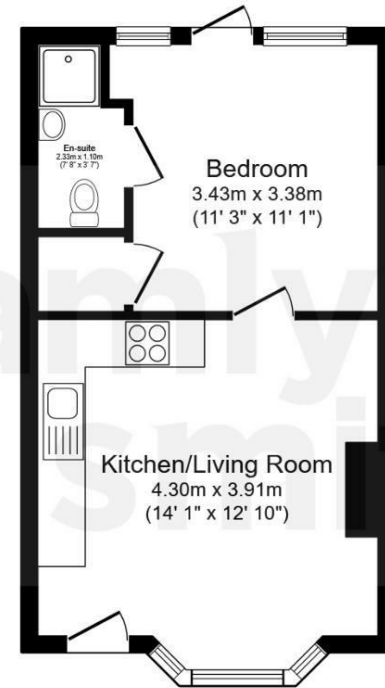
☎ 01273 762222

✉ hello@hamlynsmith.co.uk

This stylish and well-maintained one-bedroom garden apartment offers a bright, open-plan layout that's both welcoming and practical. A spacious bay window fills the living area with natural light, while a separate dining space and charming wood burner add character and warmth. The modern kitchen is thoughtfully designed and blends seamlessly into the living area, complemented by attractive wood flooring throughout.

To the front of the property, a built-in seating nook creates a private, sun-filled spot—perfect for relaxing outdoors. At the rear, the generously sized bedroom enjoys direct access to the garden via glazed doors, creating a lovely indoor-outdoor flow. The adjacent shower room is both elegant and functional, and a built-in cupboard within the bedroom provides handy extra storage.

Outside, the beautifully kept rear garden features a covered seating area, ideal for entertaining or enjoying quiet moments all year round. Located on a peaceful residential street, this home is just a short stroll from the lively Church Street in Hove, offering an array of cafés, bars, and local shops. With Hove station and the seafront also within easy reach, this is a fantastic opportunity to own a charming home in a highly desirable location.



Floor Plan

Floor area 32.9 sq.m. (354 sq.ft.)

Total floor area: 32.9 sq.m. (354 sq.ft.)

This floor plan is for illustrative purposes only. It is not drawn to scale. Any measurements, floor areas (including any total floor area), openings and orientations are approximate. No details are guaranteed, they cannot be relied upon for any purpose and do not form any part of any agreement. No liability is taken for any error, omission or misstatement. A party must rely upon its own inspection(s). Powered by www.Propertybox.io

